



Sport-Tek® Ladies Dri-Mesh® Pro Polo. L474



Ventilation panels combine with our ultra-dry mesh technology to create our coolest, most breathable polo. Stretch gussets add extra mobility.

- 4-ounce, 100% polyester mini pique on body
- 4.4-ounce, 94/6 poly/spandex stretch mesh at shoulders, sleeves, back and side panels
- Tag-free label
- Flat knit collar
- 5-button placket with dyed-to-match buttons
- Raglan sleeves

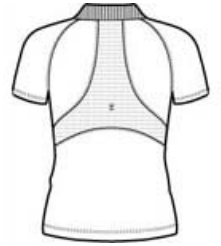
**Due to the nature of 100% polyester performance fabrics, special care must be taken throughout the screen printing process.*

CARE INSTRUCTIONS

Machine wash cold with like colors, only non-chlorine bleach when needed, tumble dry low, do not use softener, remove promptly, cool iron if necessary.



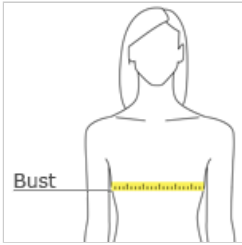
front



back

[Tips For Effectively Screen Printing Polyester Fabrics](#)

HOW TO MEASURE



BUST
Measure under the arm and around the fullest part of the bust with arms down, keeping tape horizontal.

SIZE CHART

	XS	S	M	L	XL	XXL	3XL	4XL
Size	2	4/6	8/10	12/14	16/18	20/22	24/26	28/30
Bust	32-34	35-36	37-38	39-41	42-44	45-47	48-51	52-55

COLOR INFORMATION

Black PMS NTR BLACK CPMS 7454C	Carolina Blue PMS 2217C	Dark Green PMS 703C	Engine Red PMS 504C	Maroon PMS 5255C	Navy PMS 654C	Pink Raspberry PMS C1 GY 11 C	Royal PMS 7425C	Steel PMS 7425C	White



Sport-Tek[®] Ladies Dri-Mesh[®] Pro Polo. L474

PRODUCT MEASUREMENTS

	XS	S	M	L	XL	XXL	3XL	4XL
Size	2	4/6	8/10	12/14	16/18	20/22	24/26	28/30
Bust	18	19	20	21 1/2	23	24 1/2	26 1/2	28 1/2
Sleeve Length	14	14 1/2	15	15 3/4	16 1/2	17 1/4	18 1/4	19 1/4
Body Length at Back	25	25 1/2	26	27	28	29	29 1/2	30

BUST

Measured one inch below armhole.

SLEEVE LENGTH

Start at center of neck and measure down shoulder, down sleeve to hem.

BODY LENGTH AT BACK

Measured from high point shoulder to finished hem at back.